



# mPower™

mFi Power Strip with  
Wi-Fi Connectivity

Model: mPower

QUICK START GUIDE

## Introduction

Thank you for purchasing a Ubiquiti Networks® mFi® mPower™. The mPower is a power strip with Wi-Fi capability that is designed for use with the Ubiquiti mFi platform. Once connected, you can use the mFi Controller software to define rules using your web browser. Rules detail what actions occur when trigger conditions are met. This Quick Start Guide is designed to guide you through the installation and also includes the Warranty terms.

## Package Contents



mPower



Mounting  
Plate



Screws  
(Qty. 2)



Anchors  
(Qty. 2)



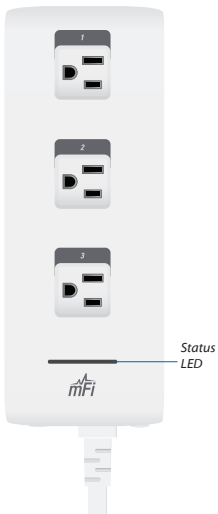
Quick Start  
Guide

## Requirements

- Wi-Fi Network
- Drill with 6 mm Drill Bit (Optional for Wall-Mount)
- Phillips Screwdriver (Optional for Wall-Mount)

# Hardware Overview

## Top



## Front



**Status LED** The *Status* LED has four primary states:



- **Solid yellow** When first powered on in factory default mode.
- **Flashing yellow** Connecting to a Wi-Fi network.
- **Solid blue** Successfully connected to mFi Controller.
- **Flashing blue** Connecting to mFi Controller.

**Device Reset Button** The *Device Reset* button serves two functions:

- **Restart** Restarts the device when you press and release it quickly.
- **Restore Factory Defaults** Press and hold until the LED alternates colors and then remains steady yellow to restore the device to the factory default settings.

**Circuit Breaker Reset Button** When excessive current triggers the circuit breaker, the outlets will shut off. Press this button to reset the unit.

## Hardware Installation

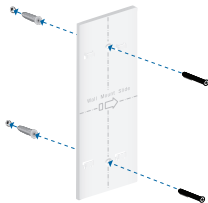
The mPower includes an optional mounting plate.

### Wall-Mount

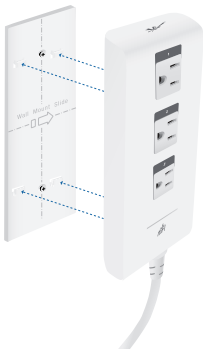
1. Position the *Mounting Plate* on the wall with the text in the proper orientation, and mark the mounting holes on the wall.



2. Use a 6 mm drill bit to drill the holes.
3. Insert the anchors into the holes and use a Phillips screwdriver to secure *Screws* through the *Mounting Plate* into the *Anchors*.



4. Align the back of the mPower with the *Mounting Plate*. Slide the mPower to the right to lock it into place.



640-00088-02

## Software Download and Installation

For local mFi Controller installations, the mFi Controller software is installed just once when you initially create a mFi network. Devices can be added at any time through the controller interface but you do not need to go through the software installation process every time you add another mFi device.

The mFi Controller software can be downloaded from the Ubiquiti Networks website.

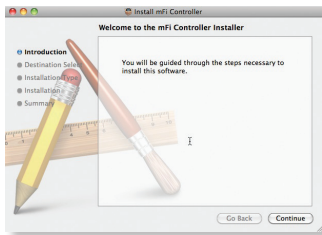
1. Go to **downloads.ubnt.com/mfi**
2. Mac users should download **mFi.dmg** and Windows users should download **mFi-installer.exe**.
3. Follow the instructions for your computer type.

### Mac Users

1. Open the **mFi.dmg** file.
2. Click the **Install** icon.



3. Click **Continue** and follow the on-screen instructions to install the software.



4. Go to **Go > Applications** and double-click the **mFi** icon.

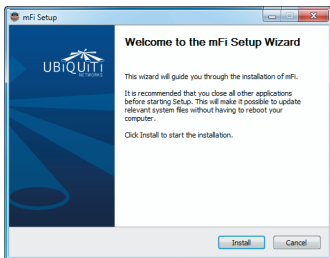


Proceed to *Configuring the mFi Controller Software*.

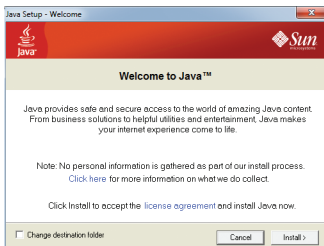


## PC Users

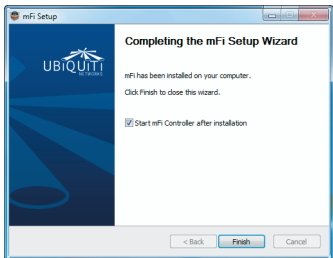
1. Launch **mFi-installer.exe**.
2. Click **Install**.



3. If your computer doesn't have Java 1.6 or above installed, you will be prompted to install it. Click **Install** to continue.



4. Ensure the *Start mFi Controller after installation* option is checked and click **Finish**.



**Note:** The mFi Controller software can also be launched from **Start > All Programs**.

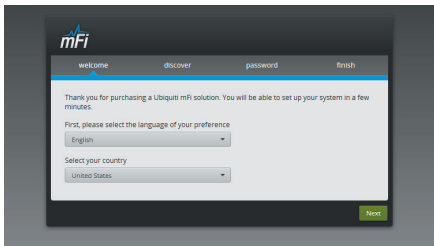


## Configuring the mFi Controller Software

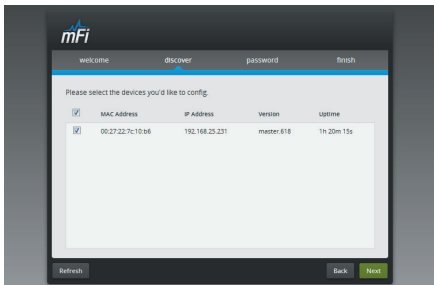
1. The mFi Controller software startup will begin. Click **Launch a Browser to Manage the Network**.



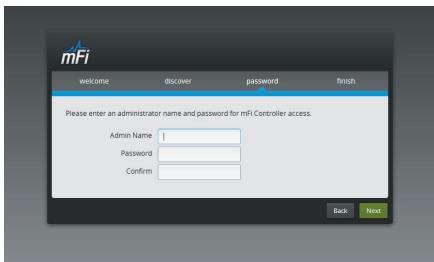
2. The *mFi Configuration Wizard* will appear the first time you launch the mFi Controller software. On the *Welcome* screen, select your language and country. Click **Next**.



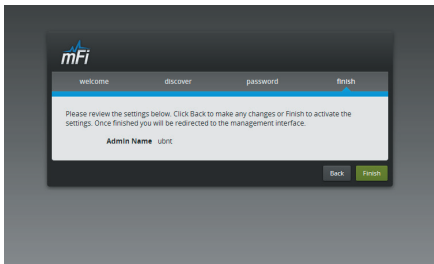
3. Select the device(s) that you want to configure. The *Refresh* button can be used to refresh the list of devices. Click **Next** to continue.



4. Enter an administrator name in the *Admin Name* field. Enter a password in the *Password* and *Confirm* fields. Click **Next**.



5. Click **Finish** to confirm your settings.





6. A login screen will appear for the mFi Controller management interface. Enter the *Admin Name* and *Password* that you created and click **Login**.





## Configuring the mPower via Wi-Fi

To configure the mPower, you must access it via Wi-Fi from a computer. The mPower has a default SSID (wireless network name) labeled *mFi* followed by the last six characters of the MAC address.

### Windows

1. Go to **Connect to Network**.
  - **Windows 8** Click the *Network*  icon.
  - **Windows 7** Right-click the *Network*  icon.
  - **Windows Vista** Go to **Start > Connect To**.
2. Select the wireless network (SSID) that begins with *mFi* and then click **Connect**. Go to *Accessing the Configuration Portal*.

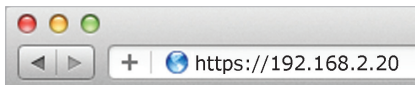
### Mac

1. Click the *AirPort*  icon in the menu bar (top right side of the screen).
2. Select the wireless network (SSID) that begins with *mFi*. Once connected, the *AirPort*  icon will change from gray to solid black.



## Accessing the Configuration Portal

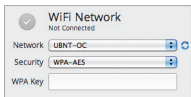
1. Launch your web browser. Type **https://192.168.2.20** in the address field. Press **enter** (PC) or **return** (Mac).



2. You may receive a security certificate warning. Click **Proceed Anyway**.
3. The *Configuration Portal* will appear. Select the wireless network name (SSID) of your existing wireless network from the drop-down list. To refresh the list, click the blue arrows on the right.

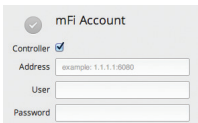


4. Enter your Wi-Fi security credentials. The options that appear are based on the encryption method used on your Wi-Fi network.



The screenshot shows a configuration window titled "WiFi Network" with a sub-header "Not Connected". It contains three input fields: "Network" with the value "UBNT-OC", "Security" with the value "WPA-AES", and "WPA Key" which is currently empty. There are small blue icons to the right of the Network and Security fields.

5. Enter the account settings:



The screenshot shows a configuration window titled "mFi Account" with a sub-header "Not Connected". It contains four input fields: "Controller" with a checked checkbox, "Address" with the placeholder text "example: 1.1.1.1:6080", "User", and "Password".

- **Address** The IP address and http port used by the Controller. (The port is usually 6080, for example: *1.1.1.1:6080* or *mfi.acme.com:6080*).
- **User** The user name defined during the mFi Configuration Wizard.
- **Password** The password defined during the mFi Configuration Wizard.

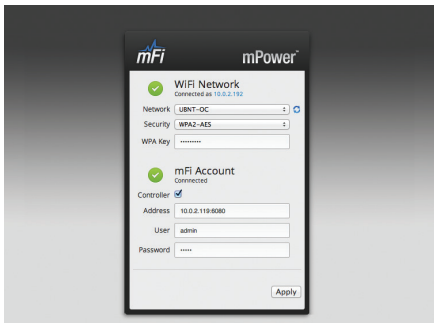
6. Click **Apply**.


7. A flashing yellow checkmark will appear while attempting to connect to the Wi-Fi network. It will appear green once the mPower is connected.





8. A flashing yellow checkmark will appear while attempting to connect to the Controller. It will appear green once the mPower is connected.



9. Reconnect your computer to your wireless network by selecting the SSID from your wireless network utility.
10. Access your Controller, and the mPower appears with the mPower  icon in the left panel under the *Drag on to Map* heading. You can position the mPower in the appropriate location.



For additional details on the mFi Controller software, please refer to the mFi User Guide available on our website at: [documentation.ubnt.com/mfi](http://documentation.ubnt.com/mfi)

## Specifications

mPower	
Dimensions	241.3 x 116.9 x 41.27 mm
Weight	790 g
Mounting	Wall (Kit Included)
Power	110-125VAC, 50-60 Hz, 15 A Per Outlet, 15 A Total
Outlets	3
Memory	16 MB RAM, 8 MB Flash
Wi-Fi Standards	802.11b/g/n
LEDs	1 LED (Status)
Operating Temperature	-10 to 45° C
Humidity	95% RH Max.

## Safety Notices

1. Read, follow, and keep these instructions.
2. Heed all warnings.
3. Only use attachments/accessories specified by the manufacturer.



**WARNING:** Use only in a dry location.



**WARNING:** Do not plug in to another relocatable power tap.



**WARNING:** To reduce the risk of electric shock, use only indoors.

## Limited Warranty

UBIQUITI NETWORKS, Inc (“UBIQUITI NETWORKS”) warrants that the product(s) furnished hereunder (the “Product(s)”) shall be free from defects in material and workmanship for a period of one (1) year from the date of shipment by UBIQUITI NETWORKS under normal use and operation. UBIQUITI NETWORKS’ sole and exclusive obligation and liability under the foregoing warranty shall be for UBIQUITI NETWORKS, at its discretion, to repair or replace any Product that fails to conform to the above warranty during the above warranty period. The expense of removal and reinstallation of any Product is not included in this warranty. The warranty period of any repaired or replaced Product shall not extend beyond its original term.

## Warranty Conditions

The above warranty does not apply if the Product:

- (I) has been modified and/or altered, or an addition made thereto, except by Ubiquiti Networks, or Ubiquiti Networks’ authorized representatives, or as approved by Ubiquiti Networks in writing;
- (II) has been painted, rebranded or physically modified in any way;
- (III) has been damaged due to errors or defects in cabling;
- (IV) has been subjected to misuse, abuse, negligence, abnormal physical, electromagnetic or electrical stress, including lightning strikes, or accident;
- (V) has been damaged or impaired as a result of using third party firmware;
- (VI) has no original Ubiquiti MAC label, or is missing any other original Ubiquiti label(s); or
- (VII) has not been received by Ubiquiti within 30 days of issuance of the RMA.

In addition, the above warranty shall apply only if: the product has been properly installed and used at all times in accordance, and in all material respects, with the applicable Product documentation; all Ethernet cabling runs use CAT5 (or above), and for outdoor installations, shielded Ethernet cabling is used, and for indoor installations, indoor cabling requirements are followed.

## Returns

No Products will be accepted for replacement or repair without obtaining a Return Materials Authorization (RMA) number from UBIQUITI NETWORKS during the warranty period, and the Products being received at UBIQUITI NETWORKS’ facility freight prepaid in accordance with the RMA process of UBIQUITI NETWORKS. Products returned without an RMA number will not be processed and will be returned freight collect or subject to disposal. Information on the RMA process and obtaining an RMA number can be found at: [www.ubnt.com/support/warranty](http://www.ubnt.com/support/warranty).

## Disclaimer

EXCEPT FOR ANY EXPRESS WARRANTIES PROVIDED HEREIN, UBIQUITI NETWORKS, ITS AFFILIATES, AND ITS AND THEIR THIRD PARTY DATA, SERVICE, SOFTWARE AND HARDWARE PROVIDERS HEREBY DISCLAIM AND MAKE NO OTHER REPRESENTATION OR WARRANTY OF ANY KIND, EXPRESS, IMPLIED OR STATUTORY, INCLUDING, BUT NOT LIMITED TO, REPRESENTATIONS, GUARANTEES, OR WARRANTIES OF MERCHANTABILITY, ACCURACY, QUALITY OF SERVICE OR RESULTS, AVAILABILITY, SATISFACTORY QUALITY, LACK OF VIRUSES, QUIET ENJOYMENT, FITNESS FOR A PARTICULAR PURPOSE AND NON-INFRINGEMENT AND ANY WARRANTIES ARISING FROM ANY COURSE OF DEALING, USAGE OR TRADE PRACTICE IN CONNECTION WITH SUCH PRODUCTS AND SERVICES. BUYER ACKNOWLEDGES THAT NEITHER UBIQUITI NETWORKS NOR ITS THIRD PARTY PROVIDERS CONTROL BUYER'S EQUIPMENT OR THE TRANSFER OF DATA OVER COMMUNICATIONS FACILITIES, INCLUDING THE INTERNET, AND THAT THE PRODUCTS AND SERVICES MAY BE SUBJECT TO LIMITATIONS, INTERRUPTIONS, DELAYS, CANCELLATIONS AND OTHER PROBLEMS INHERENT IN THE USE OF COMMUNICATIONS FACILITIES. UBIQUITI NETWORKS, ITS AFFILIATES AND ITS AND THEIR THIRD PARTY PROVIDERS ARE NOT RESPONSIBLE FOR ANY INTERRUPTIONS, DELAYS, CANCELLATIONS, DELIVERY FAILURES, DATA LOSS, CONTENT CORRUPTION, PACKET LOSS, OR OTHER DAMAGE RESULTING FROM ANY OF THE FOREGOING. In addition, UBIQUITI NETWORKS does not warrant that the operation of the Products will be error-free or that operation will be uninterrupted. In no event shall UBIQUITI NETWORKS be responsible for damages or claims of any nature or description relating to system performance, including coverage, buyer's selection of products (including the Products) for buyer's application and/or failure of products (including the Products) to meet government or regulatory requirements.

## Limitation of Liability

EXCEPT TO THE EXTENT PROHIBITED BY LOCAL LAW, IN NO EVENT WILL UBIQUITI OR ITS SUBSIDIARIES, AFFILIATES OR SUPPLIERS BE LIABLE FOR DIRECT, SPECIAL, INCIDENTAL, CONSEQUENTIAL OR OTHER DAMAGES (INCLUDING LOST PROFIT, LOST DATA, OR DOWNTIME COSTS), ARISING OUT OF THE USE, INABILITY TO USE, OR THE RESULTS OF USE OF THE PRODUCT, WHETHER BASED IN WARRANTY, CONTRACT, TORT OR OTHER LEGAL THEORY, AND WHETHER OR NOT ADVISED OF THE POSSIBILITY OF SUCH DAMAGES.

## Note

Some countries, states and provinces do not allow exclusions of implied warranties or conditions, so the above exclusion may not apply to you. You may have other rights that vary from country to country, state to state, or province to province. Some countries, states and provinces do not allow the exclusion or limitation of liability for incidental or consequential damages, so the above limitation may not apply to you. EXCEPT TO THE EXTENT ALLOWED BY LOCAL LAW, THESE WARRANTY TERMS DO NOT EXCLUDE, RESTRICT OR MODIFY, AND ARE IN ADDITION TO, THE MANDATORY STATUTORY RIGHTS APPLICABLE TO THE LICENSE OF ANY SOFTWARE (EMBEDDED IN THE PRODUCT) TO YOU. The United Nations Convention on Contracts for the International Sale of Goods shall not apply to any transactions regarding the sale of the Products.

## Compliance

### FCC

Changes or modifications not expressly approved by the party responsible for compliance could void the user's authority to operate the equipment.

This device complies with Part 15 of the FCC Rules. Operation is subject to the following two conditions:

1. this device may not cause harmful interference, and
2. this device must accept any interference received, including interference that may cause undesired operation.

NOTE: This equipment has been tested and found to comply with the limits for a Class B digital device, pursuant to part 15 of the FCC Rules. These limits are designed to provide reasonable protection against harmful interference in a residential installation. This equipment generates, uses and can radiate radio frequency energy and, if not installed and used in accordance with the instructions, may cause harmful interference to radio communications. However, there is no guarantee that interference will not occur in a particular installation. If this equipment does cause harmful interference to radio or television reception, which can be determined by turning the equipment off and on, the user is encouraged to try to correct the interference by one or more of the following measures:

- Reorient or relocate the receiving antenna.
- Increase the separation between the equipment and receiver.
- Connect the equipment into an outlet on a circuit different from that to which the receiver is connected.
- Consult the dealer or an experienced radio/TV technician for help.

## Industry Canada

This Class B digital apparatus complies with Canadian ICES-003.

To reduce potential radio interference to other users, the antenna type and its gain should be so chosen that the equivalent isotropically radiated power (EIRP) is not more than that permitted for successful communication.

This device complies with Industry Canada licence-exempt RSS standard(s). Operation is subject to the following two conditions:

1. This device may not cause interference, and
2. This device must accept any interference, including interference that may cause undesired operation of the device.

Cet appareil numérique de la classe B est conforme à la norme NMB-003 du Canada.

Pour réduire le risque d'interférence aux autres utilisateurs, le type d'antenne et son gain doivent être choisis de façon que la puissance isotrope rayonnée équivalente (PIRE) ne dépasse pas ce qui est nécessaire pour une communication réussie.

Cet appareil est conforme à la norme RSS Industrie Canada exempts de licence norme(s). Son fonctionnement est soumis aux deux conditions suivantes:

1. cet appareil ne peut pas provoquer d'interférences et
2. cet appareil doit accepter toute interférence, y compris les interférences qui peuvent causer un mauvais fonctionnement du dispositif.

## RF Exposure Warning

The transceiver described here emits radio frequency energy. Although the power level is low, the concentrated energy from a directional antenna may pose a health hazard. Do not allow people to come closer than 20 cm to the antenna when the transmitter is operating.

Additional information on RF exposure is available on the Internet at **<http://www.fcc.gov/encyclopedia/oet-bulletins-line>**

L'émetteur-récepteur décrit ici émet de l'énergie de fréquence radio. Bien que le niveau de puissance est faible, l'énergie concentrée à partir d'une antenne directionnelle peut présenter un danger pour la santé. Ne pas permettre aux gens de se rapprocher de 20 cm à l'antenne lorsque l'émetteur est en marche.

Des renseignements supplémentaires sur l'exposition aux RF est disponible sur Internet à **<http://www.fcc.gov/encyclopedia/oet-bulletins-line>**

## Online Resources

Support [support.ubnt.com](http://support.ubnt.com)

Community [community.ubnt.com](http://community.ubnt.com)

Downloads [downloads.ubnt.com](http://downloads.ubnt.com)



[www.ubnt.com](http://www.ubnt.com)